



Solar container power station is fully charged





Overview

As soon as a solar battery reaches full charge, the inverter and charge controller must step in to mitigate risks by handling excess power. They can do this in three ways: directing it back into the panels for power loss, back into the grid for credits, or forcing a dump load. Solar power station capacity: The size and capacity, often measured in watt-hours (Wh), significantly influence charging time. If the system is not tied to the grid, excess energy production would generally cause the charge controller to cease. It's more expensive since you're paying for a pre-designed and engineered solution, but damn if it doesn't make it easy! To save a bit of money instead, you can source your own solar panels, solar charge converter, batteries, inverter, and wiring, then make it all play together.



Solar container power station is fully charged



CHINA BUILDS SOLAR CONTAINER POWER STATIONS ON A ...

What is the size of Nassau solar container outdoor power What is a 20ft container energy storage system? It also includes automatic fire detection and alarm systems, ensuring safe and efficient ...

Storing Portable Power Station , OVERLAND BOUND COMMUNITY

I would keep it fully charged for any type of emergency power outage unless you already have that covered. These batteries are more than capable of being stored at full battery without issues.



When the Battery is Fully Charged, What Happens to the Excess Solar ...

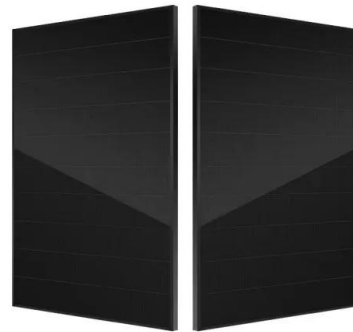
Have you ever wondered what happens to all that extra solar power when your battery is completely charged? It's a great question, and one that a lot of solar users ask when they start ...

110kvabb switch solar container , etrailer

This solar charging system helps get you off the grid with a 600-watt solar panel that provides DC power to charge your RV's batteries. Solar controller regulates and monitors power output



while



How I turned a shipping container into a solar off-grid ...

I mean, I took the easy way out with the Pecron system, but it's still a cool feeling to start with a bare shipping container and end up with an off-grid ...

12MW 13MW 15MW Battery LiFePO4 Power Station Ess Solar Container

12MW 13MW 15MW Battery LiFePO4 Power Station Ess Solar Container Battery This scheme is applicable to the distribution system composed of photovoltaic, energy storage, power load and ...



- ✓ LIQUID/AIR COOLING
- ✓ INTELLIGENT INTEGRATION
- ✓ PROTECTION IP54/IP55
- ✓ BATTERY /6000 CYCLES



POWER SOLUTIONS FOR TELECOM BASE STATIONS IN SENEGAL

What is HJ mobile solar container?The HJ Mobile Solar Container comprises a wide range of portable containerized solar power systems with highly efficient folding solar modules, advanced lithium ...



How long does it take to fully charge a solar power station?

Emphasizing the duration required for fully charging a solar power station benefits users seeking to optimize their renewable energy systems. Critical factors, including capacity, panel ...



Contact Us

For catalog requests, pricing, or partnerships, please visit:
<https://www.folkowaakademiapianina.pl>