

Solar container battery cell shipping standards





Overview

Comprehensive CINS guidelines for safely shipping lithium-ion cells in containers, covering UN regulations, packaging requirements, and risk mitigation. The enclosed document provides shipping companies, operators and carriers with safety standard guidance for the transportation of lithium-ion cells, classified under UN Nos. The IMDG Code Amendment 42-24 is the cornerstone of the updated regulations, bringing significant changes to the classification, packaging, and handling of lithium-ion batteries and their associated technologies. Lithium batteries need to be shipped with care to avoid issues like delays or rejected cargo. Due to their potential fire risk, they are considered dangerous goods and must follow international rules for packaging, labelling, documentation, and approvals.



Solar container battery cell shipping standards



- ✓ 100KWH/215KWH
- ✓ LIQUID/AIR COOLING
- ✓ IP54/IP55
- ✓ BATTERY 6000 CYCLES

Lithium Battery Guide

Each distinct shipping guide in this document refers to the regulatory requirements for a specific lithium cell/ battery type, configuration, and size. In this way, a shipper will easily find the applicable ...

Lithium Battery Guide

This guide provides scenario-based situations that outline the applicable requirements that a shipper must follow to ship packages of lithium cells and batteries in various configurations. Each distinct ...



51.2V 150AH, 7.68KWH

Shipping Standards for Energy Storage Batteries: Compliance, Safety

If you're in the renewable energy or logistics industry, you know that shipping energy storage batteries isn't as simple as mailing a package. These high-capacity devices demand strict adherence to ...



Lithium Ion Battery Shipping and Storage Containers

Lithium titanate: A costly battery that offers great performance, long life and a high level of safety, this type of cell often appears in smart grids and for storing solar panel energy. Lithium



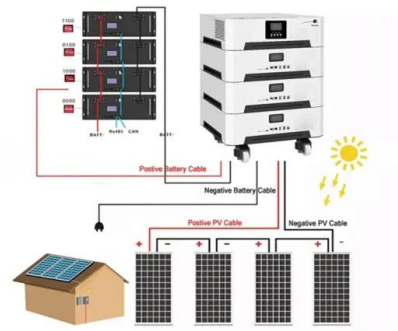
How to Ship Batteries , UPS

A UPS guide to help you safely pack and ship many kinds of batteries including lithium metal, damaged or defective batteries and alkaline or certain non-spillable lead-acid batteries.



PowerPoint Presentation

Lithium Batteries - General Provisions As set forth below DHL eCommerce accepts Lithium Metal (Primary) and Lithium-ion (Secondary) batteries for shipping that are 1) contained in equipment, 2) ...



CINS guidelines for shipping lithium-ion cells in containers

This document provides shipping companies, operators and carriers with safety standard guidance for the transportation of lithium-ion cells, classified under UN Nos. 3480 and 3481, in Cargo ...



Battery Guidance Document

Units which have two or more cells that are commonly referred to as "battery packs", "modules" or "battery assemblies" having the primary function of providing a source of power to another piece of ...



How to Ship Wet, Dry, and Lithium Batteries , FedEx

Learn how to ship your batteries with our guide. Discover how to identify your wet or dry battery and how to secure them for shipping. Our guidelines for shipping lithium batteries will help make sure you ...

Transporting batteries

A battery consists of two or more cells connected electrically and equipped with features that include casings, terminals, markings, and protective devices to ensure they work properly, such as cordless ...



Lithium Battery Shipping Guide

Welcome We are happy you decided to ship with us. Please take a few minutes to read the below page thoroughly, including the lithium battery prohibitions section. Our goal is for you to become familiar ...



shipping container solar kiosk grinder maize 'energy 4 impact

Stay off-grid longer with a power kit built for the road less traveled. Redarc's smart charging system delivers reliable battery power through every leg of the journey - whether you're driving, parked, or ...



Contact Us

For catalog requests, pricing, or partnerships, please visit:
<https://www.folkowaakademiapianina.pl>