

Salary for mechanical structure engineer at solar container research institute





Salary for mechanical structure engineer at solar container research

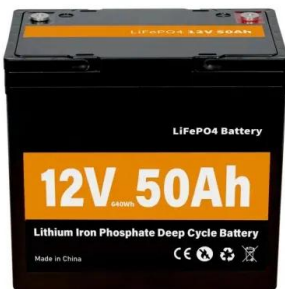


Mechanical engineering

Mechanical engineering is the study of physical machines and mechanisms that may involve force and movement. It is an engineering branch that combines engineering physics and mathematics ...

Lead Engineer Salaries in the United States for Southwest Research

Average Southwest Research Institute Lead Engineer yearly pay in the United States is approximately \$139,825, which is 23% above the national average. Salary estimated from 22 past and present job ...



Structural Engineer , Solar Career Map

As part of the clean energy economy, Civil Engineers in the solar industry conduct structural analyses for commercial and utility-scale PV power projects. Civil Engineers evaluate structural loads on solar ...

Southwest Research Institute (SwRI) Salaries in San Antonio, TX

Learn how much Southwest Research Institute (SwRI) pays its employees in San Antonio, Texas. See salaries by job title from real Southwest Research Institute (SwRI) employees.



100 Solar Container Mechanical Engineer Salary jobs in Melbourne

...

View 100 Solar Container Mechanical Engineer Salary jobs in Melbourne VIC at Jora, create free email alerts and never miss another career opportunity again.



Research Engineer Salaries in Texas for Southwest Research Institute

Average Southwest Research Institute Research Engineer yearly pay in Texas is approximately \$100,711, which meets the national average. Salary estimated from 129 past and present job

...



How Much Does Southwest Research Institute Pay in 2025? (1,345 ...

A free inside look at Southwest Research Institute salary trends based on 1345 salaries wages for 274 jobs at Southwest Research Institute. Salaries posted anonymously by Southwest Research Institute ...





Structural Engineer yearly salaries in the United States at SpaceX

Average SpaceX Structural Engineer yearly pay in the United States is approximately \$97,497, which meets the national average. Salary estimated from 40 past and present job postings on Indeed.



Mechanical Engineer: Solar-Thermal Reactor Systems

The Role We are looking for a Mechanical Engineer to join our early-stage team in developing advanced solar-thermal reactor prototypes for clean material and fuel synthesis. You will ...

Salary: Southwest Research Institute Engineering , Glassdoor

How much do Southwest Research Institute employees make? Glassdoor has salaries, wages, tips, bonuses, and hourly pay based upon employee reports and estimates.



Average Solar Turbines, Inc. Salary in 2026 , PayScale

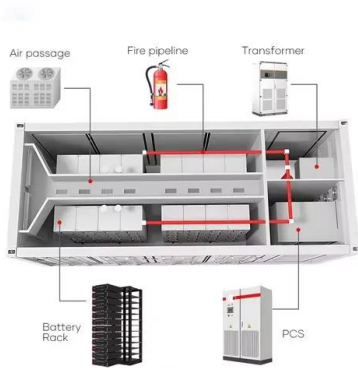
The average salary for Solar Turbines, Inc. employees is \$107,128 in 2026. Visit PayScale to research Solar Turbines, Inc. salaries, bonuses, reviews, benefits, and more!



Southwest Research Institute Mechanical Engineer Salary , \$82K

...

The median Mechanical Engineer compensation in United States package at Southwest Research Institute totals \$114K per year. View the base salary, stock, and bonus breakdowns for Southwest ...

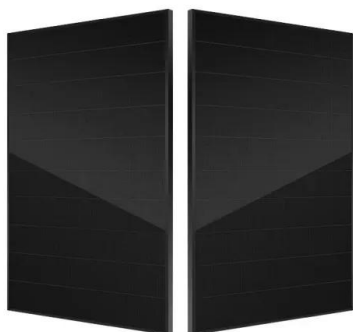


How much do Solar Research Institute employees make? , Salary

The estimated salary range of the Business Services industry where Solar Research Institute is located is between \$85,221 and \$109,696, and its average salary is about \$96,957.

Structural Engineer Salary in 2026 , PayScale

An entry-level Structural Engineer with less than 1 year experience can expect to earn an average total compensation (includes tips, bonus, and overtime pay) of \$69,655 based on 432 salaries.



Civil engineering salary & workforce research , ASCE

The Civil Engineering Salary Report is a snapshot of the current and long-term trends related to compensation & benefits in the US civil engineering industry.



Southwest Research Institute Mechanical Engineering Salaries

The estimated total pay for a Mechanical Engineering at Southwest Research Institute is \$93,740 per year. This number represents the median, which is the midpoint of the ranges from our proprietary ...



Average Southwest Research Institute (SwRI) Salary in 2026

Southwest Research Institute (SwRI) pays its employees an average of \$95,652 a year. Salaries at Southwest Research Institute (SwRI) range from an average of \$60,914 to \$140,172 a year.



Salary: Container Engineer in United States 2024 , Glassdoor

The estimated total pay for a Container Engineer is \$124,669 per year in the United States area, with an average salary of \$107,927 per year. These numbers represent the median, which is the midpoint of ...



Morrison Container Handling Solutions Salary for Mechanical Engineer

The average annual Morrison Container Handling Solutions Salary for Mechanical Engineer is estimated to be approximately \$98,675 per year. The majority pay is between \$91,390 to \$106,037 per year. ...





2025 Structural Engineer Salary Guide: Pay by State

Comprehensive 2025 structural engineer salary data by state. Compare compensation, bonuses, and benefits across all 50 states plus career advancement insights.



SpaceX

Many of our technical interns and graduate engineers are involved in student-driven engineering groups in school, focused on designing, building, testing, and/or coding. For interns in non-technical roles, ...

Solar Container Engineer Salary Master Jobs, Employment , Indeed

271 Solar Container Engineer Salary Master jobs available on Indeed . Apply to Electrical Engineer, Senior Electrical Engineer, Senior Consulting Engineer and more!

ESS



Southwest Research Institute Engineer Salaries , Glassdoor

Average salaries for Southwest Research Institute Engineer: \$98,100. Southwest Research Institute salary trends based on salaries posted anonymously by Southwest Research Institute employees.



Suez Canal Container Terminal Scct Salary in Egypt

Average Monthly Salary matching your search
criteria 17 Salary Details of Jobs with related Job
Titles Sort by: Suez Canal Container Terminal
Scct Salaries



Contact Us

For catalog requests, pricing, or partnerships, please visit:
<https://www.folkowaakademiapianina.pl>