

# Safety of solar container power stations in winter





## Overview

---

Yes, portable power stations can work in winter—but with a few chilly caveats. Want to keep your gadgets charged through sleet and snow?

Read on to learn how to squeeze every watt from your setup when the frost bites. However, when temperatures drop, their performance and safety can be compromised. winter blues with the Winter-proof BESS Container! This cold-crushing hero handles -30?

C, keeps Nordic solar farms po r solutions to maintain optimal conditions inside. As winter approaches, many regions across the country experience significant drops in temperature and snowfall, which pose more challenging operational conditions for photovoltaic (PV) power stations.



## Safety of solar container power stations in winter

---



### Can I run power to a shipping container? Off-Grid Solar ...

In practice, power and wiring in the container follow standard safety rules: ground all metal, use appropriate breakers and conduit, and adhere to the ...

### Can Portable Solar Power Stations Work in Winter?

Yes, portable power stations can work in winter--but with a few chilly caveats. Think less sun, grumpy batteries, and unpredictable weather. Want to keep your gadgets charged through sleet ...

Our Lifepo4 batteries can be connected in parallels and in series for larger capacity and voltage.



### The Advantages and Applications of Solar Power Containers

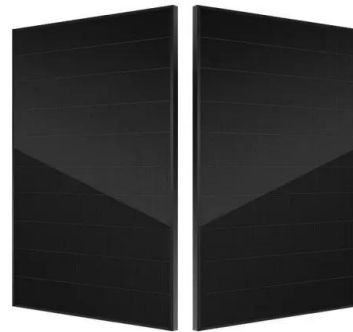
The solar power container stands at the intersection of portability, sustainability, and technological innovation. It offers a smart, reliable, and eco-friendly alternative to traditional off-grid ...

### SAFETY OF SOLAR CONTAINER POWER STATIONS IN WINTER

Beat Europe's winter blues with the Winter-proof BESS Container! This cold-crushing hero handles -30°C, keeps Nordic solar farms powered when the sun slacks off (hello 40% output a?, Shipping



...



## Storing Power Station In The Winter

Maintaining and using portable power stations in the winter can be challenging, especially for those of us living in regions with cold climates. Here's what you need to know to keep your power station in ...



## Winter-Proof BESS Container: Keeping European Solar Farms Toasty ...

Beat Europe's winter blues with the Winter-proof BESS Container! This cold-crushing hero handles -30°C, keeps Nordic solar farms powered when the sun slacks off (hello 40% output drops), ...



## Mobile Solar System Project , Solar Container Office Guide

What Is a Solar Panel on a Shipping Container/Mobile Solar System Project? A solar panel on a shipping container project integrates photovoltaic (PV) technology into standard shipping ...





## Contact Us

---

For catalog requests, pricing, or partnerships, please visit:  
<https://www.folkowaakademiapianina.pl>