

Power reserve time of seamaster 8500 movement





Overview

The pictures below are from an Omega Seamaster Aqua Terra Golf Edition and a newer style Planet Ocean XL. The 8500 equipped with Co-Axial Escapement for “greater precision, stability and durability” according to the Omega website. The AT8500 is a three-handed automatic mechanical watch featuring a date complication, with the date window at 3 'clock. It is water resistant to 150 meters (500 feet), has a screw-down crown, and is a certified chronometer bearing a COSC certification. The Omega Seamaster 8500 movement’s 60-hour power reserve isn’t just a number; it’s the Swiss-engineered answer to that midnight panic when your automatic watch stops. Engineering Marvel or Marketing Gimmick?

Let’s Settle This Omega didn’t just slap a longer.



Power reserve time of seamaster 8500 movement



Service: Omega Seamaster Professional Planet Ocean 168.1665 / ...

I get a 67 hour 50 minutes power reserve, and that is impressive. The two barrels are doing their work it seems. In terms of accuracy, I am disappointed, as the watch gains 4 to 5 seconds ...

Omega Seamaster Aqua Terra Full set for \$3,105 for sale from a ...

Omega Seamaster Aqua Terra Listing: \$3,105
Omega Seamaster Aqua Terra Full set, Reference number 231.10.39.21.02.001; Steel; Automatic; Condition Very good; Watch



Mysterious power reserve on a 2846 Seamaster , Omega Watch Forums

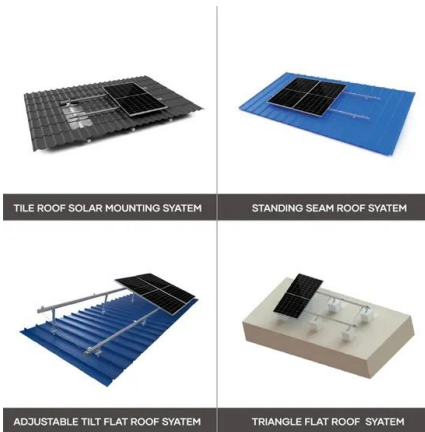
I took the watch back, but only to see that the power reserve was now around 12 to 14 hours. My other watches have not yet been serviced and they don't come nearly as close to the ...

6-Month Review of Omega Aqua Terra Calibre 8500

It is water resistant to 150 meters (500 feet), has a screw-down crown, and is a certified chronometer bearing a COSC certification. Fairly straightforward in that regard, but there are two



...



8500 Movement on 2017 PO

The 8806 calibre is the evolution of the 8400 calibre hosted inside the Seamaster 300, it maintains the same 25,200 oscillations per hour and it guarantees a power reserve of up to 55 hours, ...

Seamaster 8500 Movement Power Reserve: Why Watch Nerds Can't ...

The Omega Seamaster 8500 movement's 60-hour power reserve isn't just a number; it's the Swiss-engineered answer to that midnight panic when your automatic watch stops... right before ...



Omega Caliber 8500 Watch Movement

The Omega caliber 8500 is an in-house automatic movement. The rotor winds in both directions to reduce winding time. Power reserve of 60 hours. Swiss made. The pictures below are from an ...



Seamaster Professional Power Reserve Test , WatchUSeek Watch

...

I own a Seamaster Professional reference 2535.80.00 with an Omega caliber 2628. The Omega website, as well as blog reviews, stated that the 2628 caliber has a 48 hours power reserve. ...

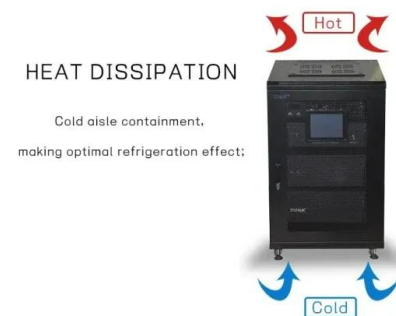


Omega Seamaster Ploprof 1200M 224.32.55.21.04.001 White Dial.

Helpful? 0 LA 5.0 Leigh A. Panerai Luminor Due 3 Days GMT Power Reserve Automatic Titanium Blue PAM00964 Leigh A. Recommends This Dealer Great experience, Bo is a professional. ...

OMEGA Seamaster Planet Ocean 600M - Bob's Watches Official ...

Caliber 8500 is Omega's in-house automatic mechanical movement that offers 60 hours of power reserve, and the Caliber 8900 takes this a step further offering METAS-certification and ...



12.8V 200Ah



The Essential Guide To The Omega Seamaster Planet Ocean , aBlogtoWatch

This changed in 2016 when they also added a grey dial/grey bezel version. Omega Seamaster Planet Ocean + Caliber 8500 Movement Of course, we can't talk about the Planet Ocean's second ...



The Omega Co-Axial Escapement Fully Explained

Omega's calibre 2500, the first movement commercialized with the Co-Axial escapement, based on an ETA 2892 ébauche. The original calibre 2500 was a modified ETA 2892 fitted with a Co ...



Watch Repair & Restoration by Mark Sirianni , The Watch Doctor

Technical Guide OMEGA Made by: pelrom
TG-19-C-051-E Date: 09.01.2007 CALIBRE 8500 -
13 Ø 29.00 mm Height on movement 8500
Height on movement 8501 Power reserve
Number Of rubies ...

Omega Seamaster Diver 300 M 007 for \$9,169 for sale from a Trusted

Omega Seamaster Diver 300 M Listing: \$9,169
Omega Seamaster Diver 300 M 007, Reference number 210.90.42.20.01.001; Titanium; Automatic; Condition Like new & unworn; Year 20



Seamaster 300 heritage 8912 movement

The most likely explanation is that it stopped close to its 60 hour reserve and when you picked it up the rotor moved enough to get the seconds hand moving again. I see it every time I put on one of my ...



Review of Omega Seamaster Planet Ocean Cal. 8500 Ceramic

Omega lists power reserve at 60 hours; during my testing, I achieved 64 hours, which is superb. The movement is of course COSC rated, which seems to be carrying less and less ...

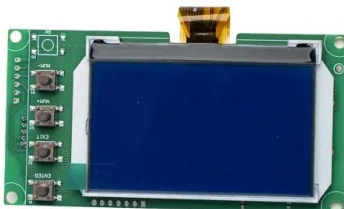


Review of Omega Seamaster Planet Ocean Cal. 8500 Ceramic

Overall, the newest version of the Omega Seamaster Planet Ocean with the Caliber 8500 movement is a worthy upgrade to the original. Yes, it costs more, but the new movement is a work of ...

Omega Seamaster Aqua Terra (Ref. 231.10.42.21.03.003) for S\$6,187 ...

Omega Seamaster Aqua Terra Listing: S\$6,187
Omega Seamaster Aqua Terra (Ref. 231.10.42.21.03.003), Reference number 231.10.42.21.03.003; Steel; Automatic; Condition



Aqua Terra 8500 Movement Energy Storage question

I've been the owner of an 8500 movement Aqua Terra Seamaster since November. I don't and I won't wear this watch everyday. I might wear it three days during the work week (say, ...



Omega Calibre 8500 Complete Guide

Having a bidirectional rotor means a reduced winding time. The caliber has a power reserve of 60 hours and is, of course, Swiss-made. In the 1970s, the Omega brand retired the 1000 series calibers. Since ...



Efficient Higher Revenue

- Max. Efficiency 97.5%
- Max. PV Input Voltage 600V
- 100% Peak Output Power
- 240V Modules, 150% DC Input Overvoltage
- Max. PV Input Current 35A, Compatible with High-Power Modules

Intelligent Simple O&M

- IP65 Protection Degree: support outdoor installation
- Smart I/F Curve Diagnosis Function: locate PV string faults accurately and automatically detect faults
- DC & AC Type II SPD: prevent lightning damage
- Battery Reverse Connection Protection

Flexible Abundant Configuration

- Plug & Play, EPC Switching Under 10min
- Compatible with Lead-acid and Lithium Batteries
- Max. 6 Units Inverters Parallel
- AFC Function (Optional): when an arc fault is detected the inverter immediately stops operation

Contact Us

For catalog requests, pricing, or partnerships, please visit:
<https://www.folkowaakademiapianina.pl>