

Does the user-side solar container power station need to be connected to the power grid





Overview

You'll need to have your power system grounded via a pair of rods or plates, but it's actually pretty easy in your case. 20ft is nothing in the electrical world, go for 8AWG or 6AWG and don't worry about it. Shipping container solar systems are transforming the way remote projects are powered. Solar power containers combine solar photovoltaic (PV) systems, battery storage, inverters, and auxiliary components into a self-contained shipping container. By integrating all necessary equipment within a transportable structure, these units provide modular, plug-and-play renewable energy systems. The core objective was to reimagine a standard shipping container as a self-contained energy hub, equipped with advanced solar integration, high-capacity batteries, and intelligent power management systems.



Does the user-side solar container power station need to be connected to the grid?

UNLOCKING OFF-GRID POWER: THE ULTIMATE GUIDE TO SOLAR ...

In today's dynamic energy landscape, harnessing sustainable power sources has become more critical than ever. Among the innovative solutions paving the way forward, solar energy ...



Solar Interconnection: What You Need to Know , EnergySage

Why is solar interconnection important? Most solar panel installations throughout the U.S. are connected to the grid. With grid-tied systems, you can draw power from the power grid when ...



How Do Solar Power Containers Work and What Are They?

Unlike traditional solar farms that require fixed installation, solar power containers are designed for mobility and rapid setup. They can be transported by truck, ship, or rail, and once on ...



Can I run power to a shipping container? Off-Grid Solar ...

In short, you can indeed run power to a container - either by extending a line from the grid or by turning the container itself into a mini power ...



How to connect a PV solar system to the utility grid

There are two basic approaches to connecting a grid-tied solar panel system, as shown in the wiring diagrams below. The most common is a "LOAD SIDE" ...



ESS

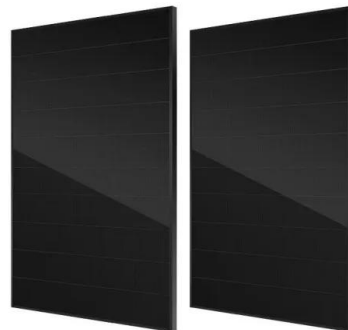


Grid-Scale Battery Storage: Frequently Asked Questions

A battery energy storage system (BESS) is an electrochemical device that charges (or collects energy) from the grid or a power plant and then discharges that energy at a later time to provide electricity or ...

Solar Integration: Inverters and Grid Services Basics

As more solar systems are added to the grid, more inverters are being connected to the grid than ever before. Inverter-based generation can produce energy at any ...



Contact Us

For catalog requests, pricing, or partnerships, please visit:
<https://www.folkowaakademianina.pl>